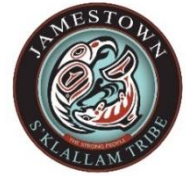


# Dungeness Off-Channel Reservoir Water Storage Proposal Summary



*Dungeness Water Users Association*



**Partners:** Clallam County, Jamestown S'Klallam Tribe, City of Sequim, Dungeness Water Users Association (Irrigators), Clallam Conservation District, and Washington Water Trust

**Brief Proposal Description:** Low flow in the Dungeness River is a significant limiting factor for four ESA-listed species of Salmon and Steelhead. Low flows are primarily a seasonal challenge, occurring in the late summer and early fall. Around mid to late August, human needs for irrigation water peak, Chinook and Pink salmon return to spawn, the snowpack feeding the river is depleted, and the river drops to its lowest flow. In all but the wettest years with ample snowpack, these low flows are insufficient to meet the needs of salmon. The biggest and most senior established water rights in the basin belong to the Dungeness irrigators. For more than a century the Dungeness Valley has been irrigated with water directly from the Dungeness River. In the last 20 years Dungeness irrigators and basin partners have invested considerable resources to conserve and enhance flow in the River. However, in low snowpack years there is still not enough flow in the river to support salmon and also meet out-of-stream water needs. The solution is a reservoir to store water during winter and spring when flows are plentiful, saving this water for later in the year when river flow is low. In addition to significantly increasing low flows, this is a multi-benefit project that will capture stormwater and prevent flooding in the City of Sequim, provide opportunities for aquifer recharge, create a new County park with river access and recreational opportunities, ensure the sustainability of agriculture in the Dungeness Valley, and provide climate resiliency for people, farms, and fish.

**Reservoir Size:** 88-Acre reservoir within a new 320-Acre County Park

**Storage Capacity:** 1500 acre feet, enough to avoid the diversion of about 25 cubic feet per second (cfs) during the critical low-flow period of Aug 15<sup>th</sup>-Sept 15<sup>th</sup> (the last month of irrigation season) when flows can be as low as 60 cfs

## **Community Benefits:**

**--Stream Flow Restoration For Salmon** The project will restore up to 25 cfs of flow in the Dungeness River by avoiding diversions, allowing the target flow-restoration goal of 105 cfs to be met, benefiting ESA-listed Salmon and Steelhead.

**--Stormwater Management** The project will alleviate flooding on roads and properties in the County and City of Sequim by intercepting storm flows before they reach infrastructure.

**--Aquifer Recharge** In years with adequate snowpack, stored winter runoff can be used for aquifer recharge that will augment flows in small streams and possibly generate mitigation credits for the Dungeness Water Exchange.

**--Long-Term Agricultural Viability** Secure access to water for irrigation is critical to maintaining agriculture in the Dungeness Valley; this project will ensure that fish can thrive and irrigation can continue without impacting flows.

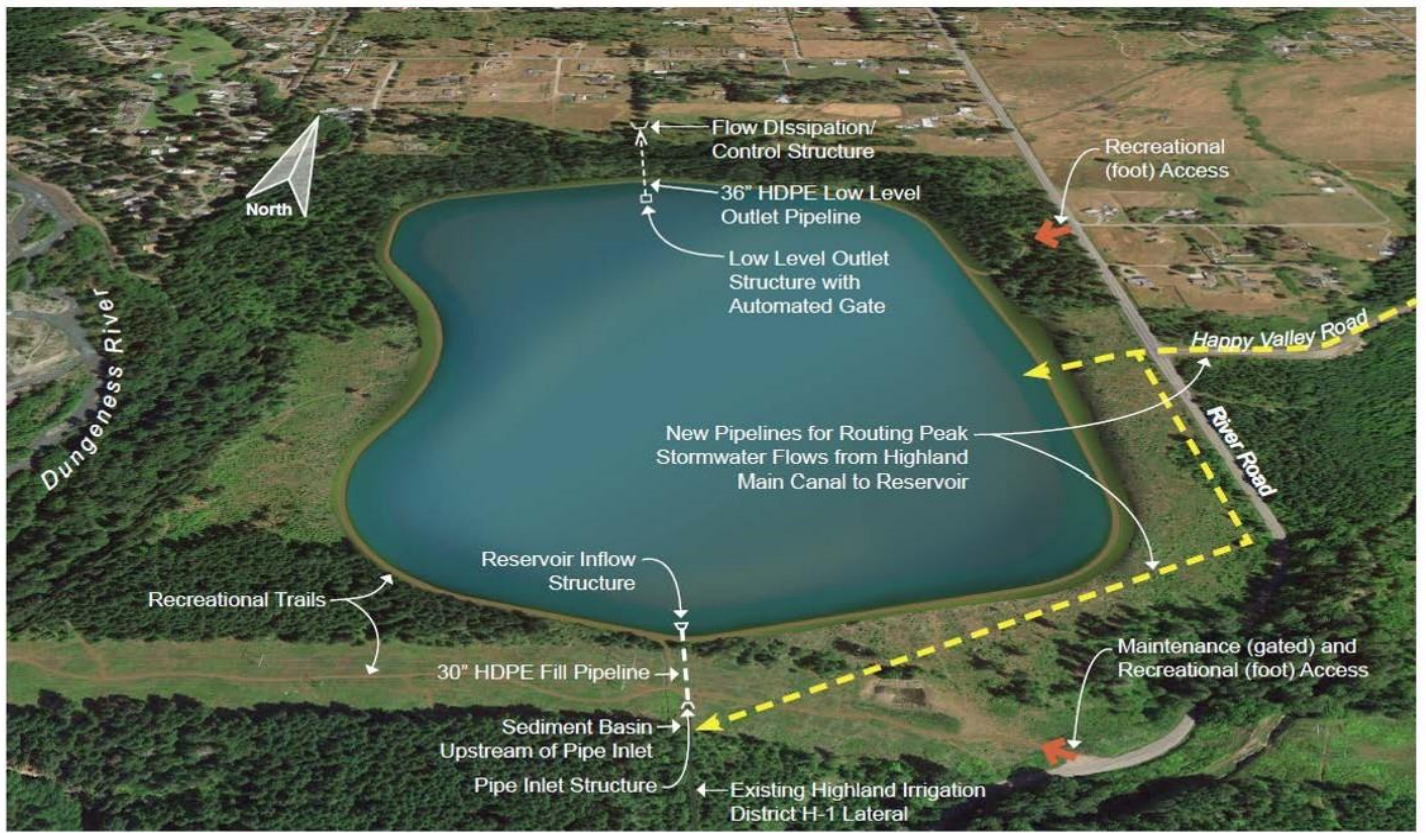
**--Recreation** The project site is currently owned by Department of Natural Resources and will be eventually owned and managed by Clallam County as a new public park with hiking, biking, wildlife viewing, and river access opportunities.

**--Climate Resiliency** Decreasing water supplies is the biggest climate concern for the region and this project provides a solution for salmon and agriculture during drought years and for drinking water supply/aquifer stability over time.

**Project Status:** Preliminary Design complete, Cost Benefit Analysis in process; Grant applications: Floodplains by Design, Salmon Recovery Funding Board, Puget Sound Restoration Acquisition Fund, FEMA Hazard Mitigation Grant. DNR supports transferring the property, and Clallam County has requested a Trust Land Transfer of the parcel.

**For More Information Contact:** Jason Hatch, [jhatch@washingtontwatertrust.org](mailto:jhatch@washingtontwatertrust.org); 360.328.3166

## Proposed Dungeness Off-Channel Reservoir



**Figure 3**  
Conceptual Rendering  
Dungeness Off-stream Reservoir  
Washington Water Trust - Clallam Conservation District - City of Sequim



### Key Contacts:

**Jason Hatch**, Washington Water Trust Project Manager  
360.328.3166, [jhatch@washingtonwatertrust.org](mailto:jhatch@washingtonwatertrust.org)

**Mark Ozias**, Clallam County Commissioner, District 1  
360.417.2233, [mozias@co.clallam.wa.us](mailto:mozias@co.clallam.wa.us)

**Joe Holtrop**, Clallam Conservation District  
360.775.3747, [joe.holtrop@clallamcd.org](mailto:joe.holtrop@clallamcd.org)

**Hansi Hals**, Jamestown S'Klallam Tribe Natural Resources Director  
360.681.4601, [hhals@jamestowntribe.org](mailto:hhals@jamestowntribe.org)

**David Garlington**, City of Sequim Public Works Director  
360.681.3439, [dgarlington@sequimwa.gov](mailto:dgarlington@sequimwa.gov)

**Ben Smith**, Dungeness Water Users Association, Maple View Farm owner, [bens@olypen.com](mailto:bens@olypen.com)

**Mike Gallagher**, WA Dep't. of Ecology Southwest Regional Office Water Resource Program Manager  
360.407.6058, [mgal461@ecy.wa.gov](mailto:mgal461@ecy.wa.gov)

**Supporters include** Washington Department of Fish & Wildlife and Washington Department of Natural Resources

For complete information view  
the Dungeness Off-Channel  
Reservoir video at  
[www.washingtonwatertrust.org](http://www.washingtonwatertrust.org)